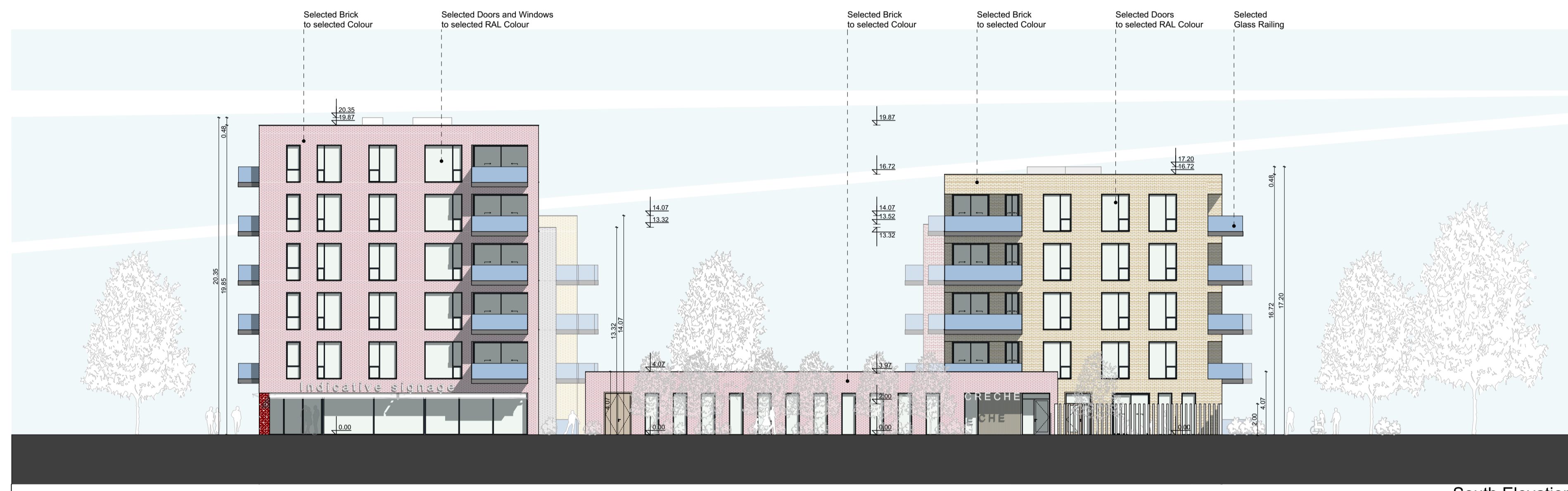




West Elevation
1:200



South Elevation
1:200



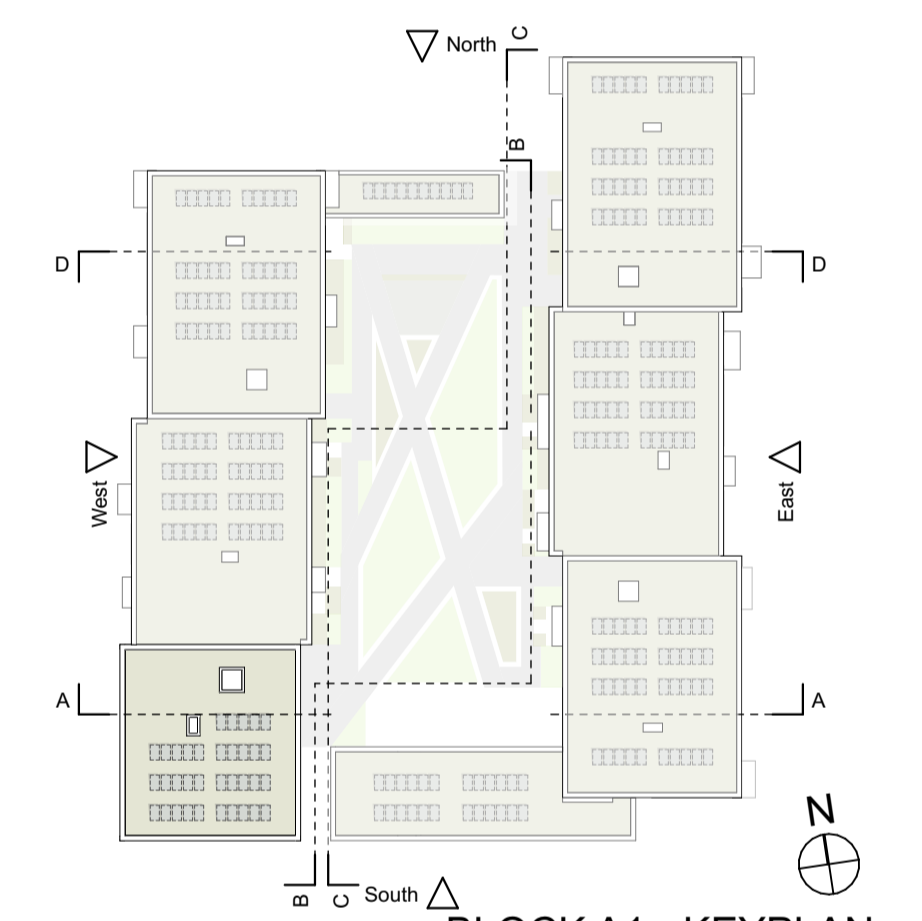
East Elevation
1:200

	1 BED	2 BED	3 BED
GROUND	3	8	2
FIRST	7	12	4
SECOND	7	12	4
THIRD	7	12	4
FOURTH	2	4	1
FIFTH	1	1	1
TOTAL - 92 Apts	27	49	16
MIX	32%	51%	17%

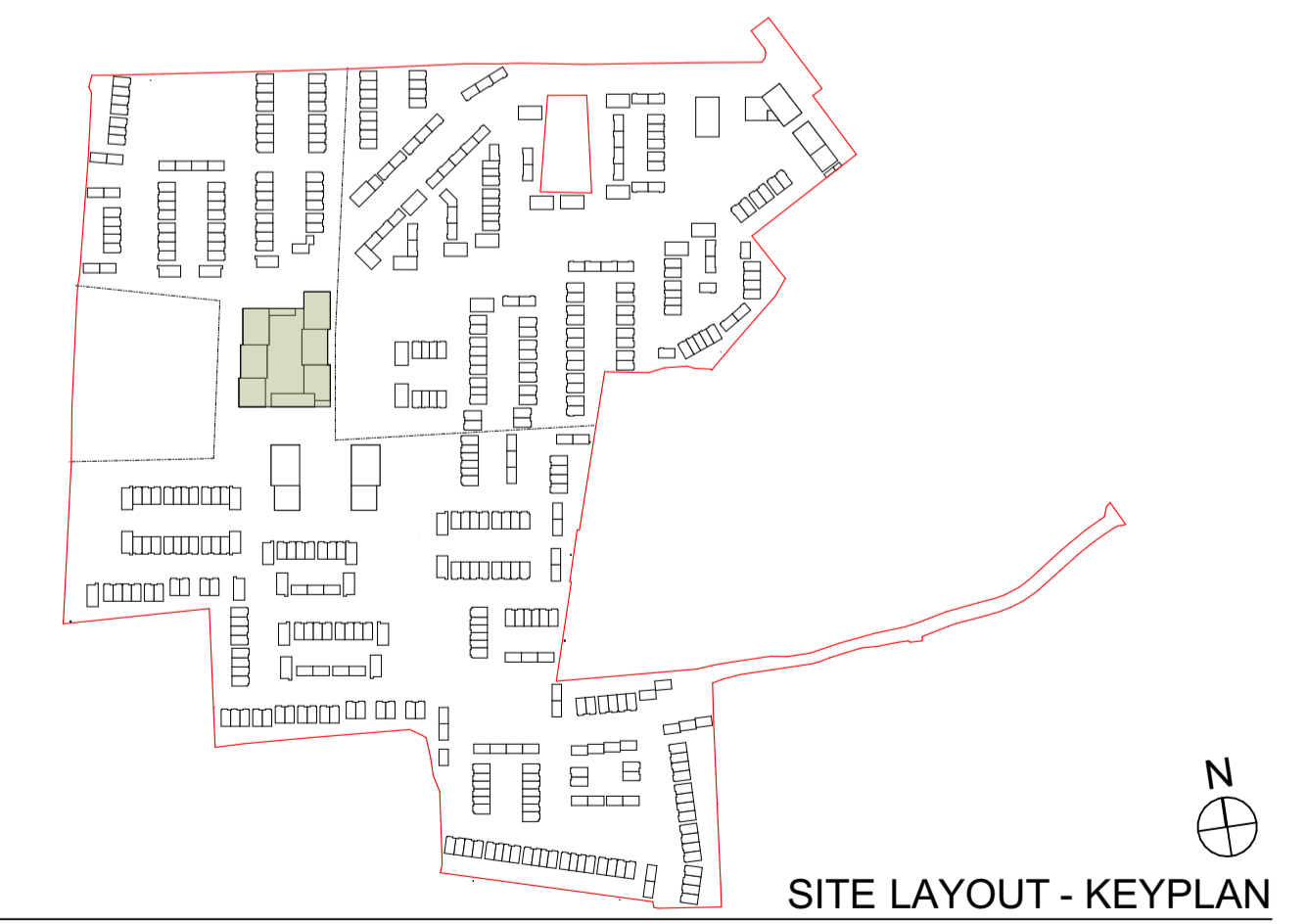
ONE BED APARTMENT 1B/2P	
TWO BED APARTMENT 2B/3P & 2B/4P	
THREE BED APARTMENT 3B/5P	
NOTES ON FINISHES:	
ROOF:	GREEN ROOF AS SHOWN
WALLS:	SELECTED CLAY BRICKWORK WHERE INDICATED, OTHERWISE SELECTED SELF-COLOURED RENDER
BALUSTRADES:	TO BE GLAZED/METAL RAILINGS AS INDICATED.
JOINERY:	ALL WINDOWS AND DOORS, FRAMES AND LEAFS TO BE ALUMINIUM POWDER COATED TO APPROVED COLOUR OR UPVC OR PAINTED TIMBER TO APPROVED COLOUR. OBSCURE GLAZING WHERE INDICATED TO SENSITIVE WINDOWS.
BIKE PARKING PROVISION:	250 COVERED LONG TERM SPACES & 32 ON STREET SHEFFIELD STANDS
TOTAL:	282
BASEMENT CAR PARKING PROVISION:	126 SPACES
ACCESSIBLE PARKING SPACES:	6 (5%)
EV CHARGING FACILITIES:	Refer to TTA Report.
	*Refer to drawing "D2101.S.14 Site Layout - Parking" for detailed breakdown and locations of all provided car and bicycle parking.
DUAL ASPECT RATIO	55%
COMMUNAL OPEN SPACE	919m ²
RETAIL UNITS	191m ²
GP PRACTICE / MEDICAL USE	186m ²
CRECHE	384m ²

Do not scale from this drawing.
Use figured dimensions only.
All errors and omissions to be reported to the Architect.
This drawing is to be read in conjunction with relevant consultant's drawings.
All dimensions and levels are in meters unless otherwise noted.
This drawing is for planning purposes only and not for construction.
This drawing or design may not be reproduced without permission.
Refer to site plans and site elevations for site specific finished floor levels above datum, orientation and handing.

Floor to ceiling heights shown for structural elements.
All finished floor to ceiling heights to be a minimum of 3m at ground floor and 2.6m at all other floors, excluding service areas and car parks.



BLOCK A1 - KEYPLAN
1:750



SITE LAYOUT - KEYPLAN
NTS

Apartment Block - A1

TOTAL GFA: 10,084.19m²

RIAI	Planning Application	DAVEY + SMITH ARCHITECTS
-------------	-----------------------------	------------------------------------

DAVEY+SMITH ARCHITECTS 13 SEAPONT BUILDING, 4445 CLONTARF ROAD, CLONTARF, DUBLIN 3 PH: 01 2447638 EMAIL: info@davey-smith.com WEB: www.davey-smith.com	
Layout ID: D2101 - BL.A1.11	Scale: 1:200
Project: Ashbourne SHD	Job No: D2101
Drawing Name: Block A1 - Elevations	Series: PLANNING
	Date: 01/09/2022
	Status: Planning

THIS DRAWING TO BE READ IN CONJUNCTION WITH RELEVANT CONSULTANT DRAWINGS. NOTIFY ARCHITECTS OF ANY DISCREPANCIES. CHECK DIMENSIONS ON SITE. USE FIGURE DIMENSIONS ONLY. COPYRIGHT RESERVED FOR DAVEY + SMITH ARCHITECTS LTD.